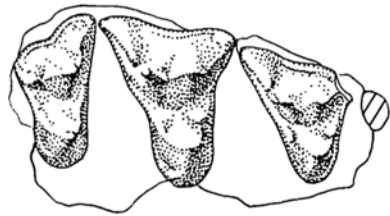




Creodonta



C

Prototomus phobos (UM 74134) Gingerich and Deutsch, 1989

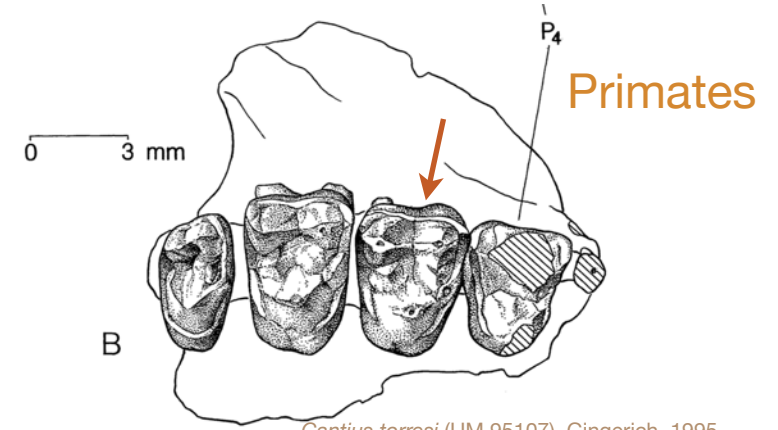


A



B

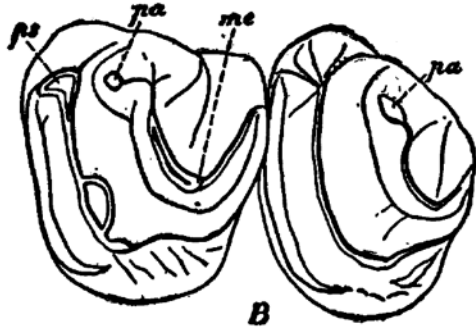
Prototomus secundarius (UM 75570) Gingerich and Deutsch, 1989



B

Cantius torresi (UM 95107) Gingerich, 1995

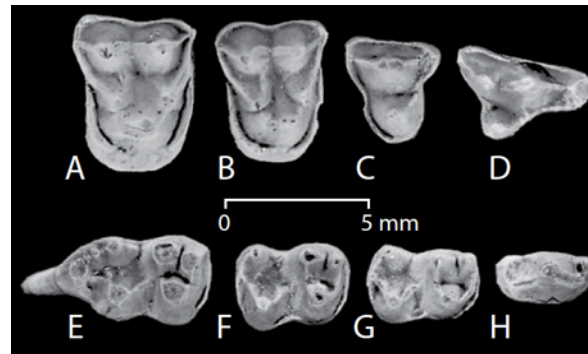
Pantodonta



B

Coryphodon (AMNH various), Earle, 1892

Artiodactyla



A

B

C

D

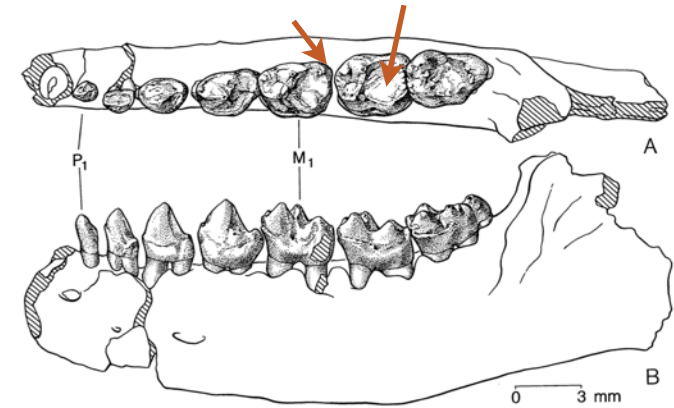
E

F

G

H

Diacodexis ilicis (USNM various), Rose et al., 2012



A

B

Cantius torresi (UM 101958) Gingerich, 1995

Perissodactyla



A



B

0 10mm

Hyracotherium sandrae (UM 83567) Gingerich, 1989

Condylarthra



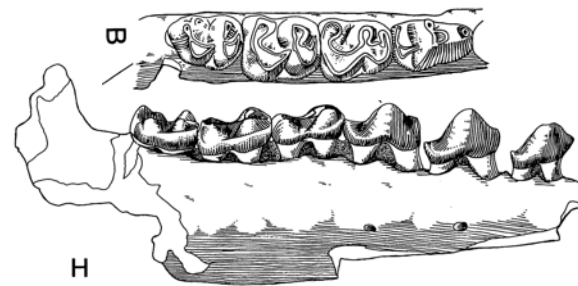
C



D

Hyposodus loomisi (UM 74075) Gingerich, 1989

Macroscelidea



B

H

Haplomylus speirianus (YPM 31825) Gingerich, 1994